

Appalachian Trail - Pochuck Crossing

Primary Service: Engineering

Type: Trail & Boardwalk System

Owner/Client: NJDEP

Location: Vernon, New Jersey

Cost: Constructed by Volunteers

Square Footage: 1 mile

Completion Date: 2004

Contact: Mr. Ed Mulvan

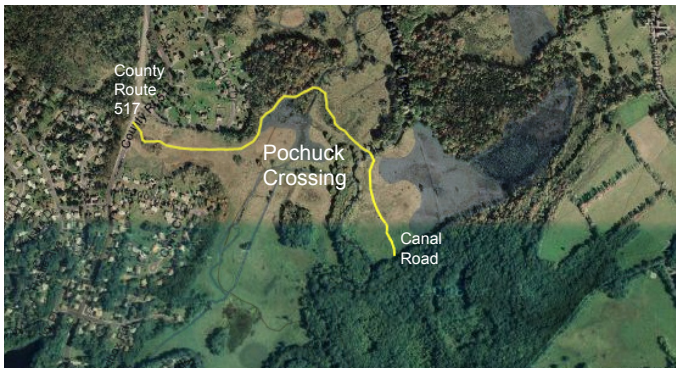
NJDEP Project Manager

(609) 292 - 4853

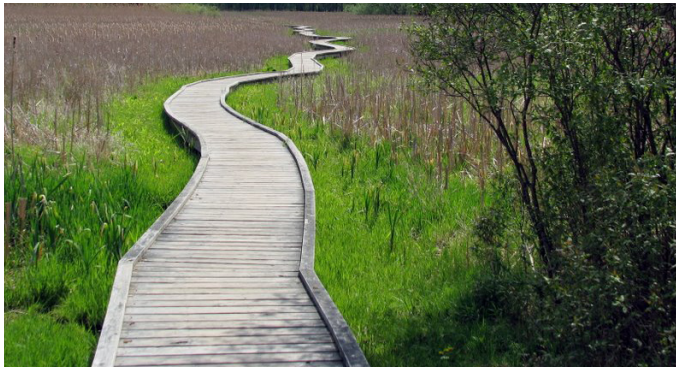
Project Manager: Rich Wostbrock, PE, LEED® AP

Project Number: 2.2364.63

LAN
LAN ASSOCIATES
ENGINEERING
PLANNING
ARCHITECTURE
SURVEYING, INC.
WWW.LAN-NJ.COM



An aerial map of the trail section location which shows the scale of project.



A view of the new boardwalk looking out the Cove.



A view of the completed boardwalk in the snow at the Black Creek Crossing.

Project Scope:

LAN is the Engineer of Record for the relocation of a section the Appalachian Trail through the Pochuck Valley River basin in Vernon, New Jersey. LAN coordinated with the NJDEP Parks and Forestry staff and volunteer groups to select an appropriate trail location through the river basin and adjoining wetlands. LAN's scope of services included: site surveying, ADA compliant trail layouts and boardwalk design, and NJDEP Land Use permitting.

Services Performed:

- Topographic Survey
- Geotechnical Investigation & Wetlands Delineation
- Civil & Environmental Engineering
- Stream Encroachment Permitting
- Wetlands Permitting
- Cost Estimates
- ADA Compliance