

# Bloomfield Middle School

**Primary Service:** Architecture  
**Type:** Educational  
**Owner/Client:** Bloomfield Board of Education  
**Location:** Bloomfield, New Jersey  
**Square Footage:** 3,600 sf  
**Completion Date:** October 2001  
**Contact:** Mr. Peter Keaney  
Facility Manager  
(201) 416 - 8100  
**Project Manager:** James Sanders  
**Project Number:** 2.2335.37

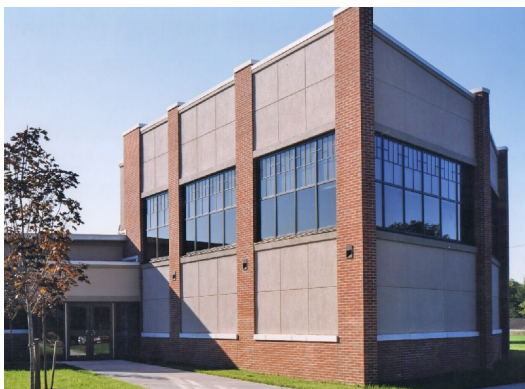
**LAN**  
LAN ASSOCIATES  
ENGINEERING  
PLANNING  
ARCHITECTURE  
SURVEYING, INC.  
[WWW.LAN-NJ.COM](http://WWW.LAN-NJ.COM)



Interior entrance view to the new media center.



A view of the periodical area.



Entrance view of Bloomfield Middle School Media Center.

## Project Scope:

The original circular library was used by students as a circulation "short cut", utilizing the main media center space as a corridor. The architectural design solved this "problem" and created a new hub, the starting point of a logarithmic spiral that organizes the 3,600 SF media center expansion. Logarithmic spirals are seen everyday in nature, mathematics, art and architecture. Many buildings are proportioned in accordance with the "Golden Mean" - a constant, which is the ratio of the sides of a rectangle when rotated about themselves to form a logarithmic spiral. It is hoped, the teachers will capitalize on this exciting learning tool and integrate the concept into an interdisciplinary event, teaching logarithms in math. The media center design incorporates an ever growing spiral in the floor plan, ceiling heights, furniture arrangements, muntin patterns and interior details. The starting point is boldly stated in the floor pattern over which each student and teacher will pass. As in a seashell, all future growth radiates out from this point and accelerates.

The media center expansion includes two state of the art computer rooms, a generous reading room/stack area, a semi-private periodical area, and a large meeting/projection room able to also handle community meetings after hours.

## Services Performed:

- Architectural Design & Documentation
- Civil, Structural, Mechanical, & Electrical Engineering
- Cost Estimating
- Construction Administration & Observation

## Program Highlights:

- 3,600 sf Media Center Expansion
- Improved Circulation Pattern